

| ROOF DRAINAGE CALCULATIONS | |
|---|--|
| HIGH ROOF - EAST SIDE | |
| ROOF AREA (square feet) | 35,852 SQ. FT. |
| CONTRIBUTING SLOPED ROOF AREA (square feet) | - |
| 1/2 AREA OF CONTRIBUTING VERTICAL PARAPET (square feet) | - |
| COMBINED ROOF AREA (square feet) | 35,853 SQ. FT. |
| Rainfall Rate (inches per hour) | 4.5 INCHES |
| VOLUME OF ACCUMULATED RAINFALL PER HOUR: | 13,445 CU. FT. / 100,575 GAL. |
| TOTAL GALLONS PER MINUTE (GAL / 60 MIN) | 1,676 GPM |
| NUMBER OF 4x5 MIN. DRAIN LEADERS PROVIDED: (10) | 1,676 GPM / 10 = 167.6 GPM PER LEADER |
| (4x5 VERTICAL LEADERS = 360 GPM CAPACITY) | |
| HIGH ROOF - WEST SIDE | |
| ROOF AREA (square feet) | 17,584 SQ. FT. |
| CONTRIBUTING SLOPED ROOF AREA (square feet) | - |
| 1/2 AREA OF CONTRIBUTING VERTICAL PARAPET (square feet) | - |
| COMBINED ROOF AREA (square feet) | 17,584 SQ. FT. |
| Rainfall Rate (inches per hour) | 4.5 INCHES |
| VOLUME OF ACCUMULATED RAINFALL PER HOUR: | 6,594 CU. FT. / 49,327 GAL. |
| TOTAL GALLONS PER MINUTE (GAL / 60 MIN) | 822.12 GPM |
| NUMBER OF 4x5 MIN. DRAIN LEADERS PROVIDED: (6) | 823 GPM / 6 = 137 GPM PER LEADER |
| (4x5 VERTICAL LEADERS = 360 GPM CAPACITY) | |
| LOW ROOF 1- WEST SIDE | |
| ROOF AREA (square feet) | 4,000 SQ. FT. |
| CONTRIBUTING SLOPED ROOF AREA (square feet) | 5,213 SQ. FT. |
| 1/2 AREA OF CONTRIBUTING VERTICAL PARAPET (square feet) | 361 SQ. FT. |
| COMBINED ROOF AREA (square feet) | 9,574 SQ. FT. |
| Rainfall Rate (inches per hour) | 4.5 INCHES |
| VOLUME OF ACCUMULATED RAINFALL PER HOUR: | 3,590 CU. FT. / 26,855 GAL. |
| TOTAL GALLONS PER MINUTE (GAL / 60 MIN) | 447.58 GPM |
| NUMBER OF 4x5 MIN. DRAIN LEADERS PROVIDED: (3) | 448 GPM / 3 = 150 GPM PER LEADER |
| (4x5 VERTICAL LEADERS = 360 GPM CAPACITY) | |
| LOW ROOF 2- WEST SIDE | |
| ROOF AREA (square feet) | 20,034 SQ. FT. |
| CONTRIBUTING SLOPED ROOF AREA (square feet) | 13,055 SQ. FT. |
| 1/2 AREA OF CONTRIBUTING VERTICAL PARAPET (square feet) | 335 SQ. FT. |
| COMBINED ROOF AREA (square feet) | 33,424 SQ. FT. |
| Rainfall Rate (inches per hour) | 4.5 INCHES |
| VOLUME OF ACCUMULATED RAINFALL PER HOUR: | 12,534 CU. FT. / 93,761 GAL. |
| TOTAL GALLONS PER MINUTE (GAL / 60 MIN) | 1562.68 GPM |
| NUMBER OF 4x5 MIN. DRAIN LEADERS PROVIDED: (5) | 1,563 GPM / 5 = 313 GPM PER LEADER |
| (4x5 VERTICAL LEADERS = 360 GPM CAPACITY) | |

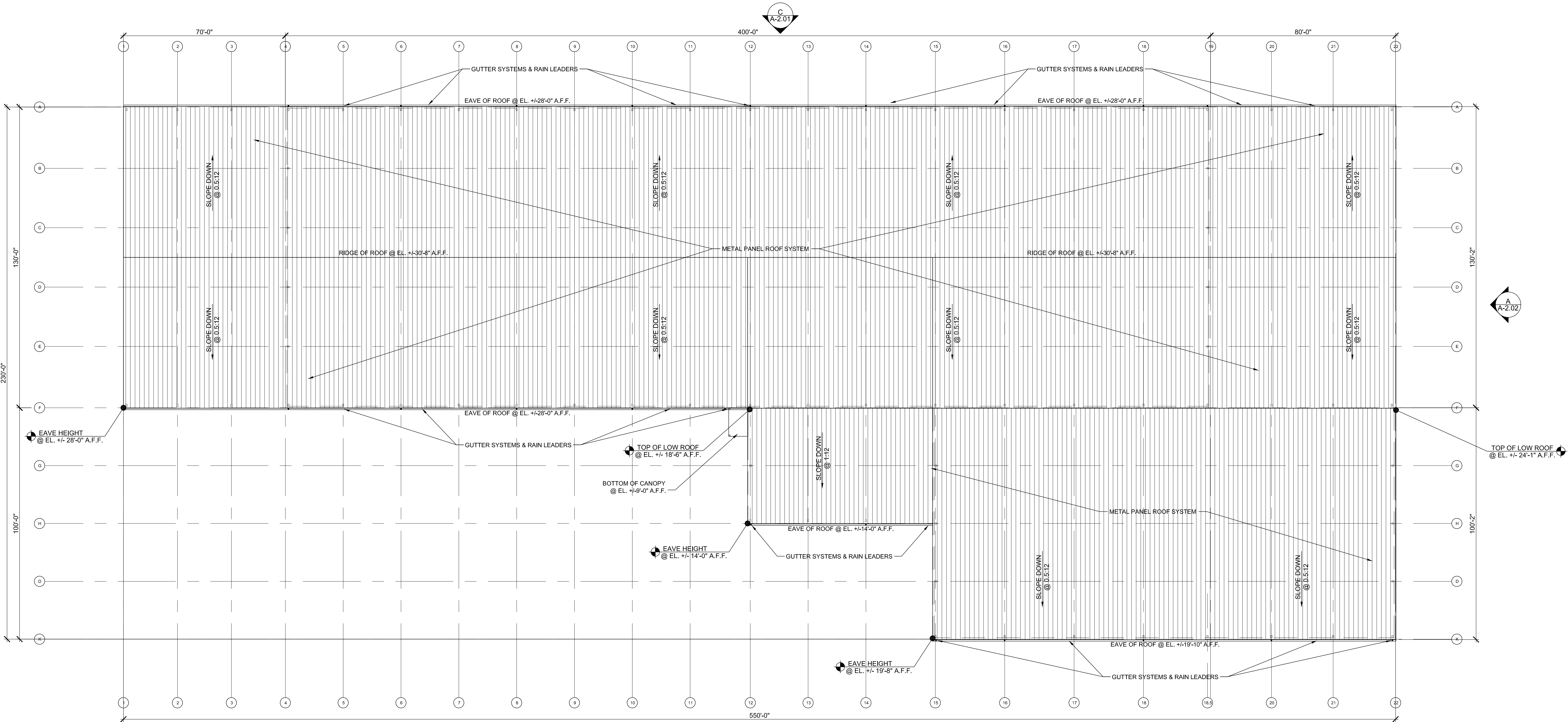
ROOFING SPECIFICATIONS & NOTES

CAP FLASHING & EAVE DRIP EDGE FLASHING:
CONTINUOUS PRE-FINISHED GALVALUME RIDGE CAP FLASHING, CRICKET FLASHING, WALL FLASHING
AND EAVE DRIP EDGE / GUTTER FLASHING BY METAL BUILDING MANUFACTURER PER APPROVED SHOP DRAWINGS

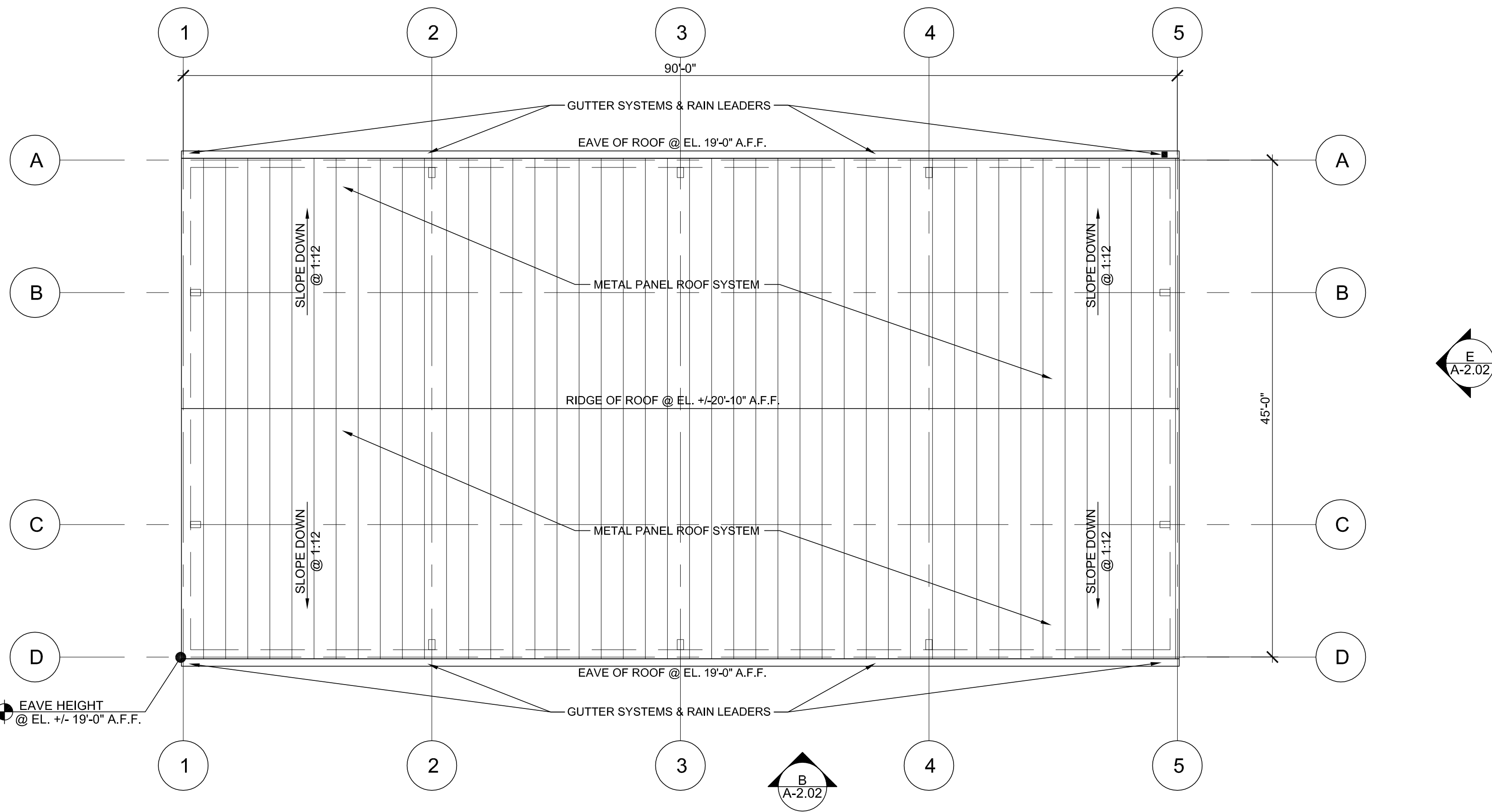
GUTTER & RAIN LEADER SYSTEMS:
DECORATIVE GUTTER SYSTEMS TO BE CONTINUOUS AT LOW SIDE OF PITCHED ROOF AREAS BY METAL
BUILDING MANUFACTURER PER APPROVED SHOP DRAWINGS. RAIN LEADERS TO BE CONNECTED
BELOW GRADE TO CIVIL STORM WATER SYSTEM - SEE CIVIL, PAVING, GRADING & DRAINAGE PLAN - G.C.
TO INCLUDE GUTTERS, 8" Ø PERFORATED PVC PIPE, RAIN LEADERS IN SCOPE

METAL ROOFING PANEL SYSTEM:
BY METAL BUILDING MANUFACTURER PER APPROVED SHOP DRAWINGS

FIXED RIDGE VENT ASSEMBLIES:
BY METAL BUILDING MANUFACTURER PER APPROVED SHOP DRAWINGS



ROOF PLAN 1
SCALE: 1" = 20'-0"



ENLARGED ROOF PLAN @ MECHANIC'S BUILDING 2
SCALE: 1/8" = 1'-0"